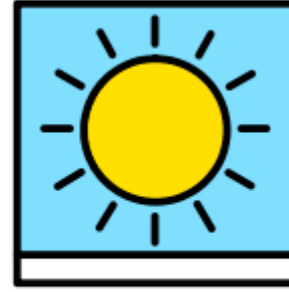


Signs

of the



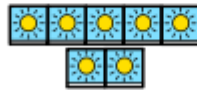
day!



Term

2

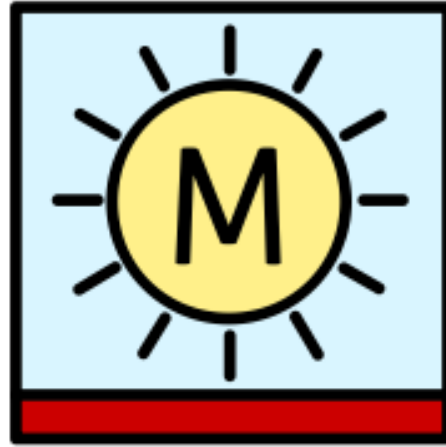
2



Week

2

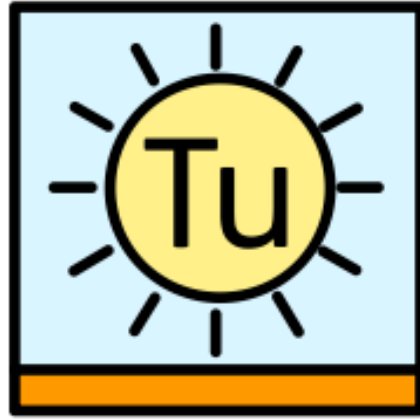
2



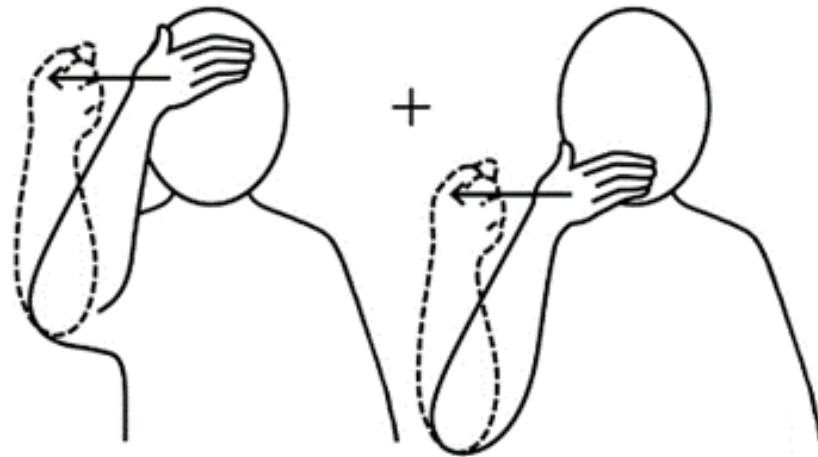
Monday



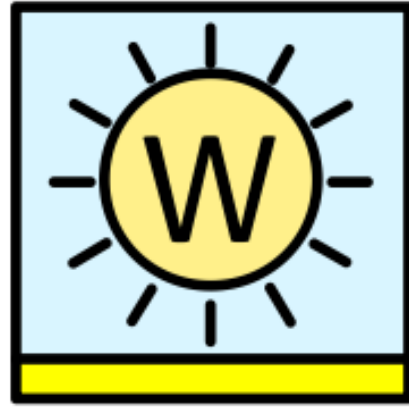
Spring



Tuesday



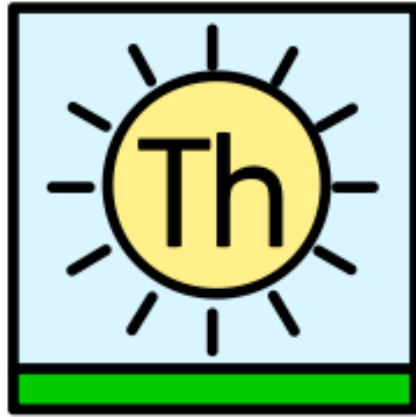
Summer



Wednesday



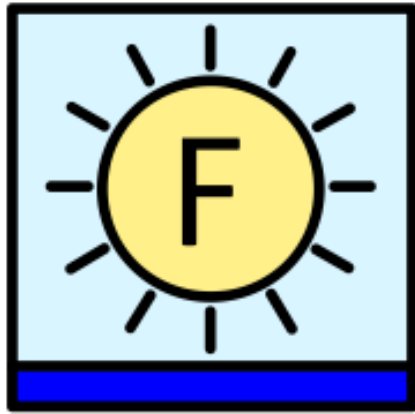
Autumn



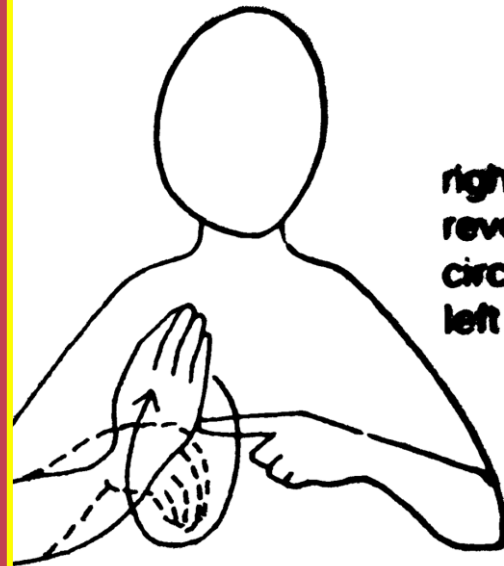
Thursday



Winter



Friday



**right bunched hand
revolves in forward
circle on point of
left index finger**

Seasons

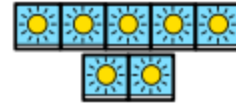


Our



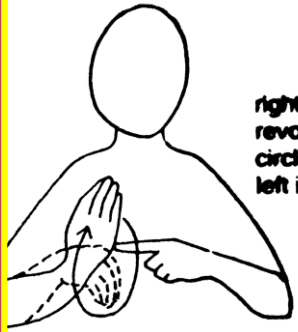
sentence

of the



week

is...

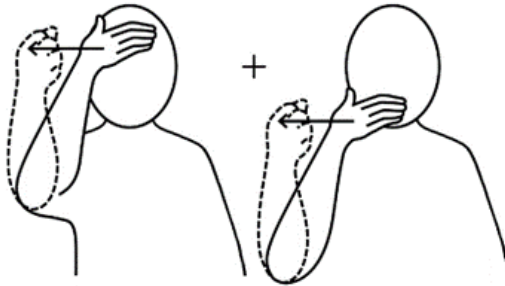


right bunched hand
revolves in forward
circle on point of
left index finger

Seasons



Spring



Summer



Autumn



Winter

4



The

four

seasons

are



Spring,



Summer,



Autumn

and



Winter